

Using Mapguide Open Source – Basic Layout
Monteith & Sutherland Limited



Travel to www.mssurvey.com, click your desired plan type.

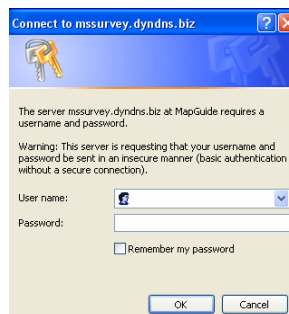


Click your desired IMS.



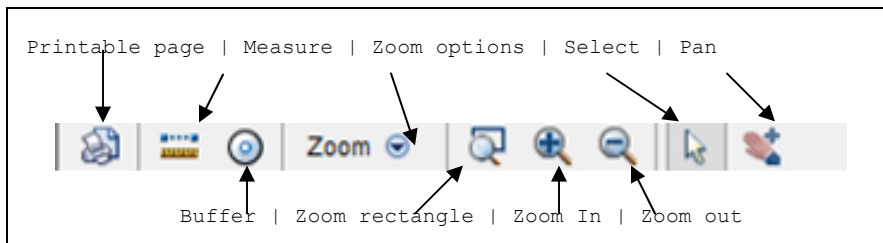
A Password authentication is required for this site,
- use your given **ID**
- and your given **password**

*Note: ID and password is **Case Sensitive**.*



Now the map will be open.

The below image will outline the available tools and applications.

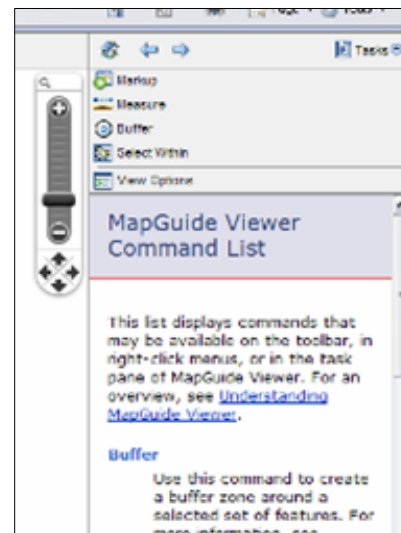


For more detailed information on all of the tools provided by Mapguide Open Source, See the Mapguide Viewer Command List.

Task Pane

The Task pane is an advanced tool based window that enables the user to learn about the tools in the 'Mapguide Viewer Command List', Conduct tasks such as Markup, Measure, Measure, Buffer, and Select Within. You can also adjust the units you prefer to measure and buffer in.

The zoom bar can be used as an Alternative to the other zoom tools. With it, you can zoom in and pan quicker and easier. The zoom bar is also moveable and can be moved to any part of the map in case it is in the way.



Markup

Markup is a tool that enables users to draw features, and label those features on the map. To start Markup, Click the markup tool in the task pane drop down menu.

Click **New**

This will open the Manage Markup. From here you can create new Markup, or open existing markup.

To begin, click '**New**'.

This will open the New Markup Layer page.

From here you can define the individual types of markup. Meaning you can define your point style, line style, polygon style and label style.

For this example we will leave the definition of each style as default. It is named **Test**.

Scroll to the bottom and click **OK**.

Note: Once you define the style of your Layers you are unable to go back and Adjust or change their style.

You will be taken back to the Manage Markup page, in the '**Open markup**' space, Click '**Test**', and click **Edit**.

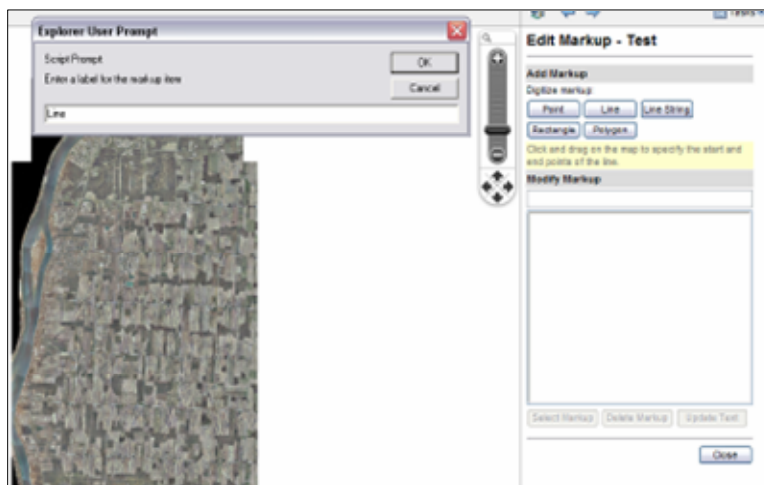
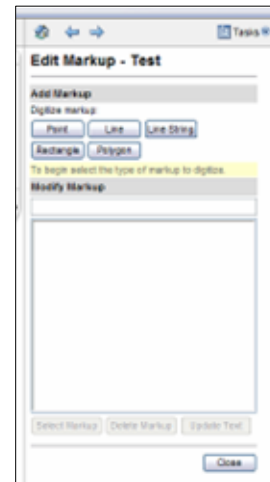


The next page that opens is the 'Edit Markup - (Markup Name)' page.

This is the page where you create layers which become part of the Markup.

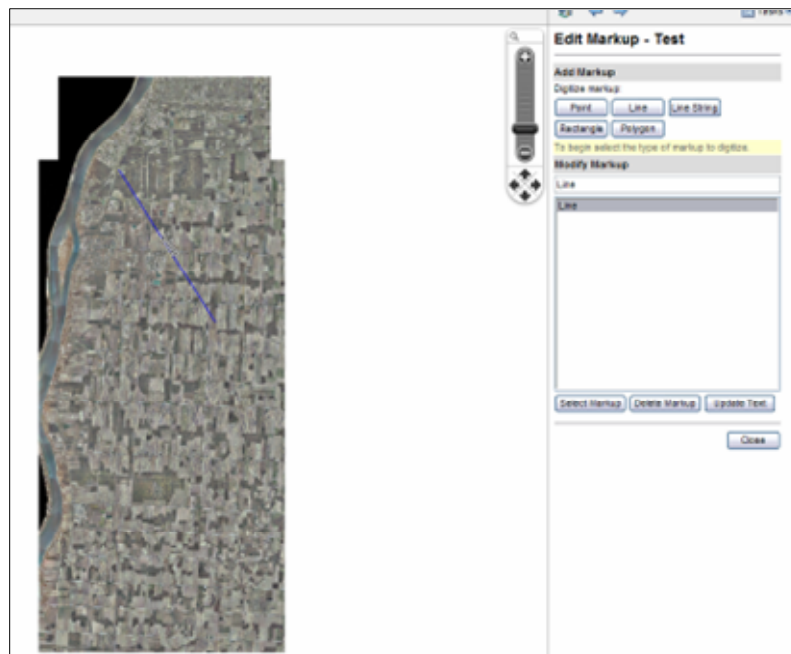
When you click a markup type (point, line etc.) The highlighted text outlines the proper way to digitize that layer type.

Once you are finished digitizing that layer, A label prompt will appear, label the Markup as desired.



Once a layer is created, it is added to the 'Modify Markup' Space. Here you can Select a markup layer, making it selected in the selection pane, or you can delete that layer.

You can also write a new label in the modification space, then click 'update text' to change the label of the selected layer.



Selecting Layers

Selected layers can sometimes be a confusing task. This can be confusing mainly because Mapguide will select any layers in the area that was clicked.

For example, if you click a line that happens to be in a polygon, Mapguide will select both layers.



Clicking here can cause confusion

Therefore, when you look at your selection in the selection pane, you might believe you are viewing the lines info, but really, you are seeing the polygons info.

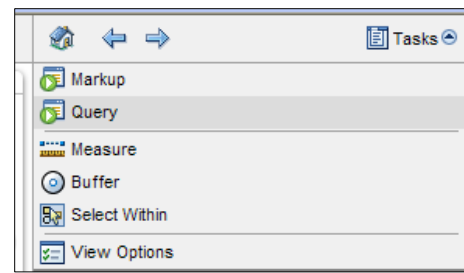
The solution is to turn off the layer you don't want to view the data of. This will ensure that you are only selecting one layer.

Query

Query is a tool that allows users to choose unique properties of a layer and select or zoom to these objects. The Query tool is good for identifying plans, roads, and property etc.

Click the Tasks button in the Task Pane and click Query.

Once you click Query, the Query Page will appear. There is only One Query page so everything can be Conducted much easier.



Here is the Query page:

The first part of the procedure is to Select a Layer to search within.

Then Select the attribute to search by.

Then Select the operation to search by. The operation is the filter for that Layer. It will provide anything relative To the Search value based on the operation.

Now select the output property. The Output property is the field you want returned. E.g. If you search by *ID*, and Want the reference plan of that *ID*, make the output property *Reference plan*.

Click Execute and the results will appear. You can than click zoom and/or select.

