

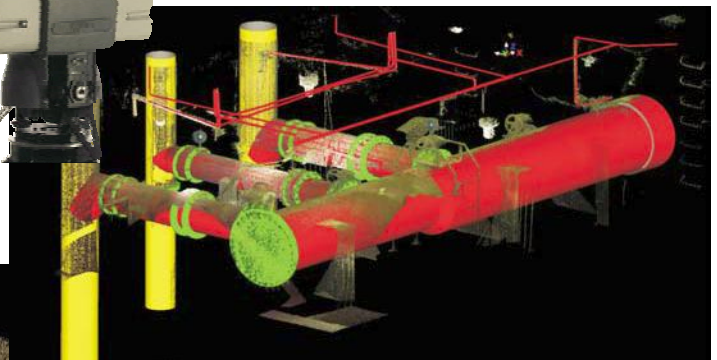
## High-Definition Surveying

Monteith & Sutherland Limited provides a wide range of surveying and engineering services. We have acquired new technology for High Definition Surveying (HDS). In a nutshell, our 3D laser scanner will cover any complex object with precisely measured points allowing a virtual 3D computer generated model to be



Suppliers have an opportunity to gain a competitive edge and owners will receive a superior product at significant cost savings. We have received numerous requests for our new service and we have successfully delivered products to our engineering, industrial and municipal clients. Our HDS initiative will add to our committed service to the Lambton County area and Chemical Valley as well as our clients all over Ontario.

produced. Precise measurements can be made, interferences can be identified and as-built conditions can be documented. The 3D scanner is non intrusive and is operated remotely therefore allowing us to avoid unsafe working conditions. The recorded 3D data can be converted into detailed, photo-realistic 3D illustrations or precisely modeled features for engineering and design. Monteith & Sutherland Limited will be able to supply our clients and their suppliers with a more comprehensive product, in terms of content and accuracy and in turn reduce cost and time overruns.



For more information on how HDS may benefit you, please contact Monteith & Sutherland Limited at the number above.